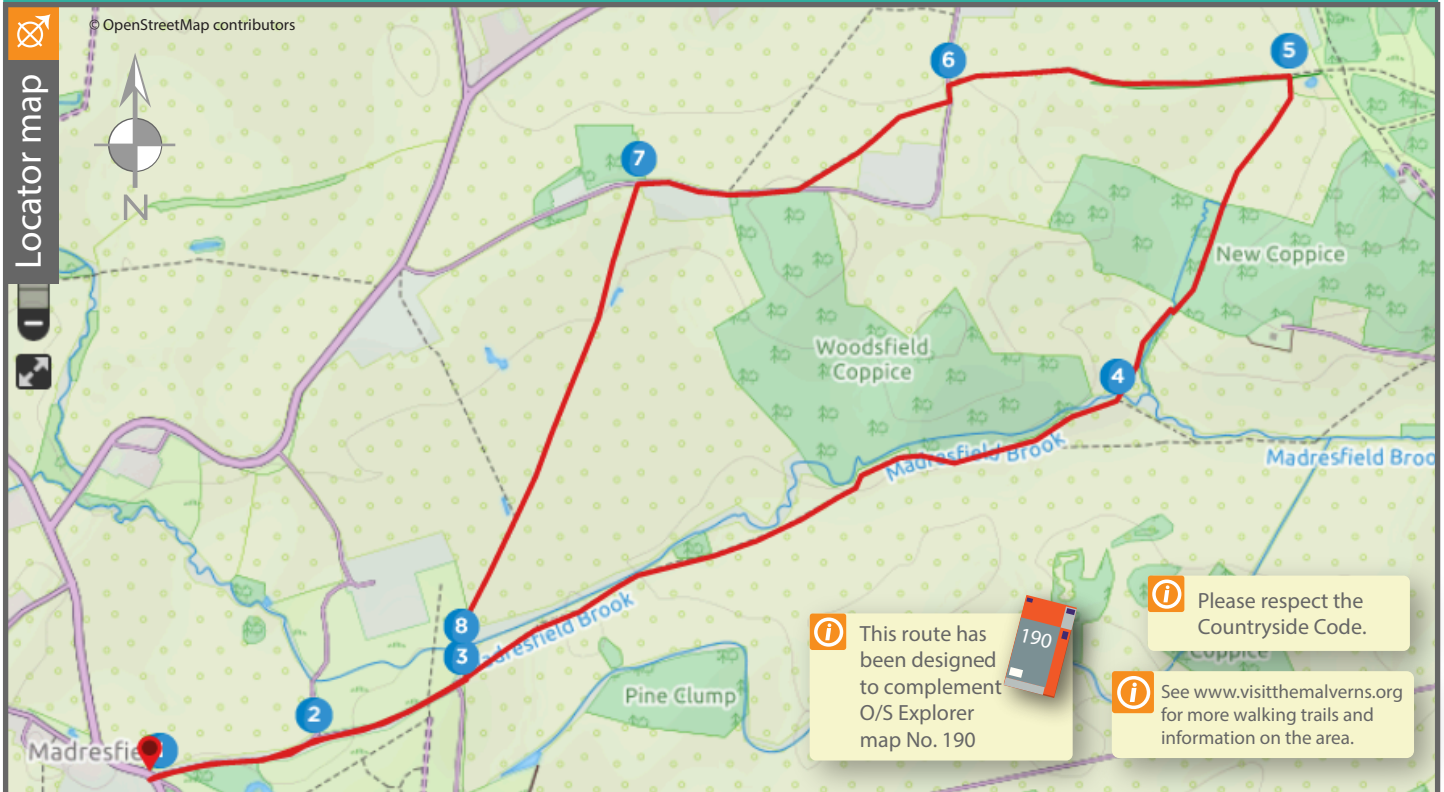


A CIRCULAR WALK FROM MADRESFIELD TOWARDS  
THE OLD HILLS AT CALLOW END

## HOW TO GET THERE (including parking)

**By car:** The walk begins from the corner in Madresfield opposite the Madresfield Early years centre. There is plenty of on-street parking in the village.

**By train:** West Midlands railway operate a regular service between Hereford and Birmingham New Street, stopping at Malvern Link station which is 1.9 miles from the start of the walk.

**By bus:** There are no bus services that run directly to Madresfield. However, the main A449 is only a 20 min walk from the start which has buses running from Worcester. Check out the First Group website for further details.



## WALK DIRECTIONS

## 1 Start of the walk

The route starts from the lodge of Madresfield Court on the corner in Madresfield directly opposite Madresfield Early Years centre. Go through the gate and follow the footpath along the tarmacked road. You'll reach a fork shortly after a bench. Bear right here.

## 2

Go through the wooden gate and continue to follow the tarmacked path down the hill and underneath two archways. After the second arch you will see a gate in front of you. Head through the kissing gate to the left of this gate.

## 3

Continue to follow the footpath straight through the long field, keeping the big oak tree on your right. As you get to the end of the field you will see a stile. Go over this. Continue to follow the footpath on the edge of the field. Once you have crossed over the bridge, turn immediately right through the gap in the wooden fencing and continue to follow the field uphill, keeping the wooden fencing on your left.

## 4

Once you have crossed over the bridge, turn immediately right through the gap in the wooden fencing and continue to follow the field uphill, keeping the wooden fencing on your left.

When you get to the top go through the gate on your right (a big metal field gate and smaller kissing gate). Immediately after this gate you will see a stile on your left. Go over this into the woodland. Follow the woodland path all the way to the end. At the end of the woodland cross over the bridge and into the field. Follow the footpath to the end of the field, where you will meet a small metal gate. Go through this.

## 5

After the metal gate immediately turn left. Continue to follow the brideway that hugs the edge of the field. At the end of this field, bear right and continue through the large metal gate. Continue to follow this track until it meets another track.

## 6

Turn left here. As soon as you have joined this track you will see immediately on your right a small bridge and metal gate. Go over this footbridge and through the gate into the field. Follow the footpath diagonally, keeping the telegraph poles on your left. At the top of the field you will see a stile. Go over this into the next field. Continue to walk in a diagonal to the brow of the hill, keeping the telegraph poles to your right. Re-join a track at the top and turn right onto this. Follow the track until you reach a large metal farm

gate. Continue to follow the track which then becomes a tarmacked road with a red brick house on your left.

## 7

Shortly after the red brick house you will need to turn left on to a footpath, going over a stile. Continue to follow the footpath on a diagonal through the well marked path in the field down the hill. You will pass through into the next field also with a well marked path on a diagonal through it. At the end of this field you will reach another stile. Go over this into the next field. Another well marked footpath. Continue to follow this. As it drops down you will meet a bigger track turn left onto this which heads towards a bridge followed by a large metal farm gate and stile to the left of this. Go over the stile.

## 8

Continue to follow the footpath that heads up through this field. At the top of this field on your right will be a large metal farm gate with a kissing gate to the right hand side. Go through this. Rejoin the tarmacked path that goes under the two arches. Go through the gate at the top of the hill, past the bench that you saw at the start and continue to follow this footpath to the end of your walk.